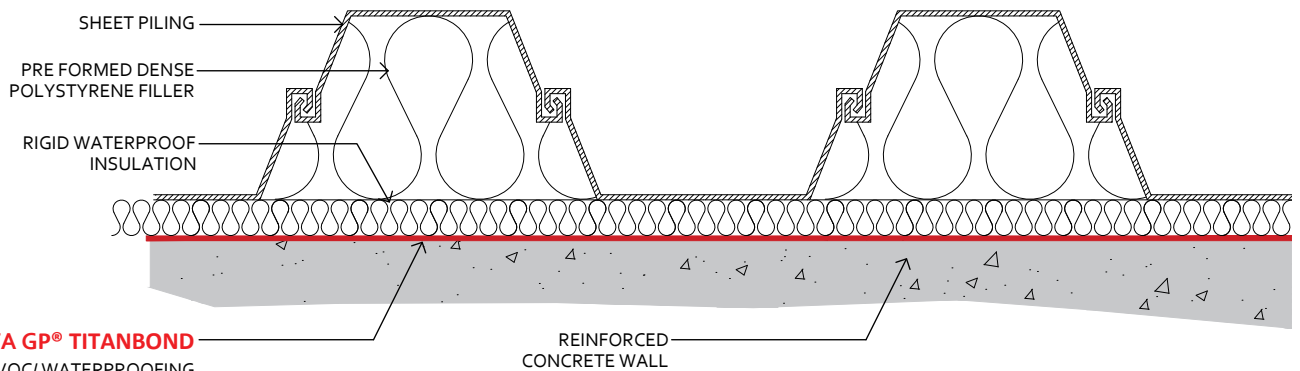
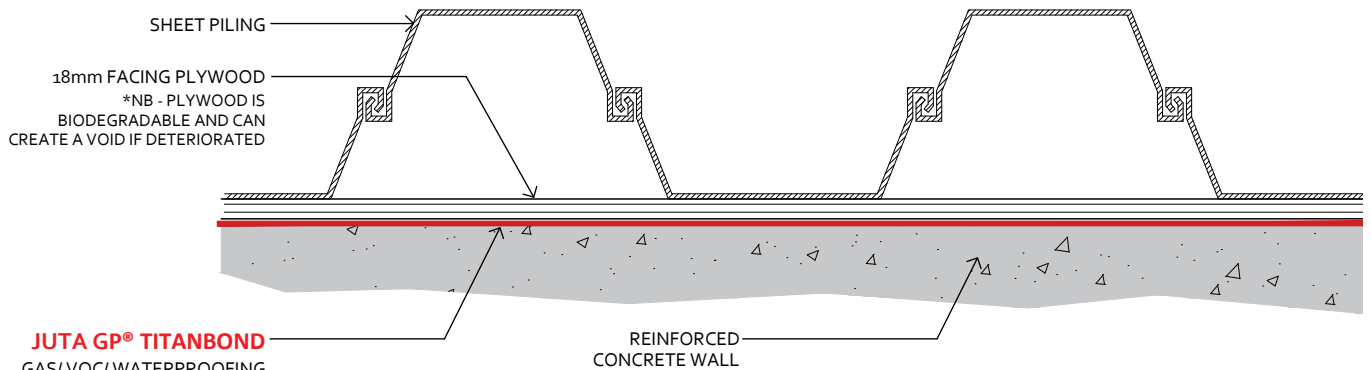


JUTA GP® TITANBOND
GAS/VOC/WATERPROOFING
MEMBRANE. MECHANICALLY FIXED
TO SHEET PILE AND CONCRETE



JUTA GP® TITANBOND
GAS/VOC/WATERPROOFING
MEMBRANE. MECHANICALLY
FIXED TO RIGID INSULATION



JUTA GP® TITANBOND
GAS/VOC/WATERPROOFING
MEMBRANE. MECHANICALLY
FIXED TO FACING PLYWOOD

DRAWING TITLE

GP®TITANBOND - SHEET PILE FACING OPTIONS

NOTES

- Detail is Generic to Application so should be used as a guide not a specific installation detail.
- GP®TITANBOND is a TYPE A Waterproofing membrane, in accordance with BS8102:2009, suitable for Grade 1, 2 and 3 Basement constructions.
- GP®TITANBOND is a Radon, Methane and Carbon Dioxide Barrier, in accordance with BS8485:2015+A1:2019
- GP®TITANBOND is a VOC barrier in accordance with C748:2014
- Gas protection should be independently verified in line with BS8485: 2015 +A1: 2019 and CIRIA C735: 2014
- All design decisions made by others that might have an impact on the gas and waterproof design performance should be brought to the attention of the design team and Juta UK Ltd. Final decisions and/or any recommendations should be approved by the design team and Juta UK Ltd.
- Dimensions are not to be scaled from this drawing. All written measurements are to be checked on site by the contractor
- All rights described in chapter IV of the copyright, design and patents act 1988 have been generally asserted

DRAWING NUMBER

JUTA.TB.006

DRAWN BY

PD

CHECKED BY

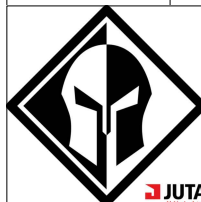
PF

SCALE

Not to Scale

DATE

Dec. 2020



**MELTON GROVE WORKS
BLACKPOOL ROAD
LYTHAM
FY8 5PL**

Tel: 01772 754177

JUTA
MEMBRANE SYSTEMS